

PINCH VALVE

SLEEVES

INNOVATION
QUALITY
EXPERTISE



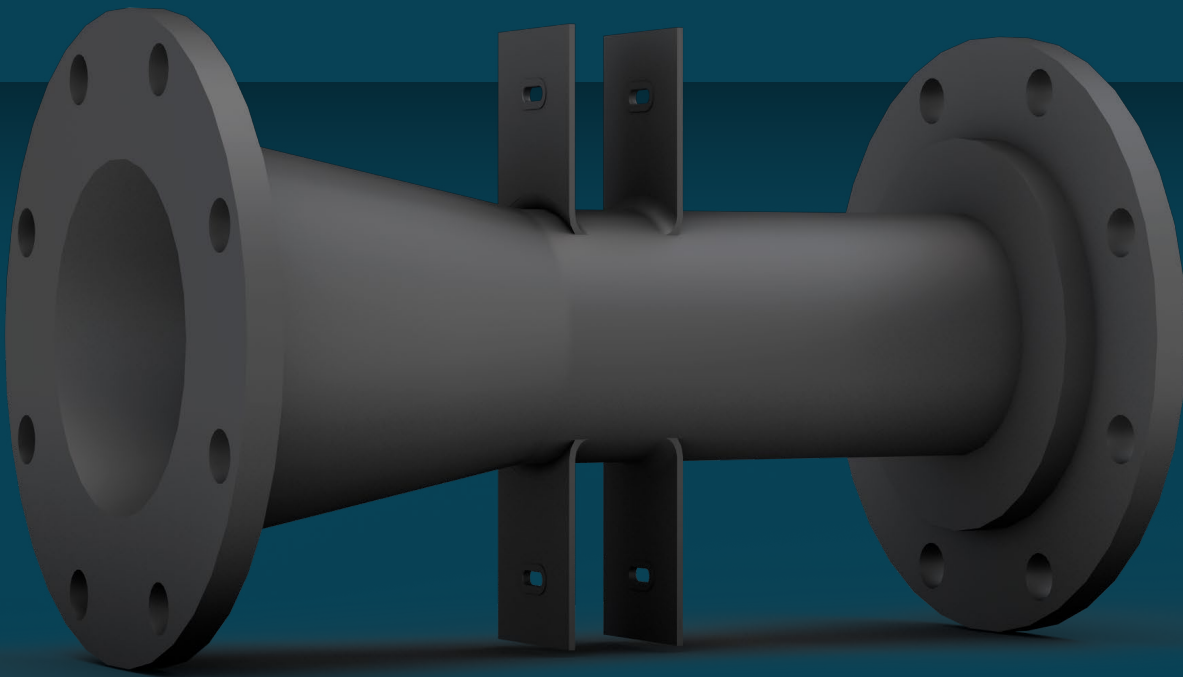
TRINOVA SLEEVES




Trinova pinch valve sleeves are manufactured in the United States, and offer excellent performance to face most flow media, in particular those with high abrasion characteristics.


Trinova sleeves excel from the more than 30 years of experience in the design, manufacturing and marketing of elastomeric products.

Trinova also offers troubleshooting, analysis application improvement proposals, and sizing selection assistance, to reduce potential cavitation and wear therefore increasing the life expectancy of the sleeve.

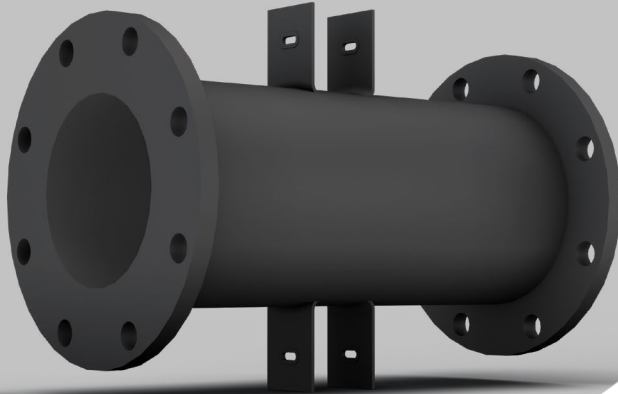


 Size: 1" - 14".

 Type: Full Port, Cone, Cone Funnel.

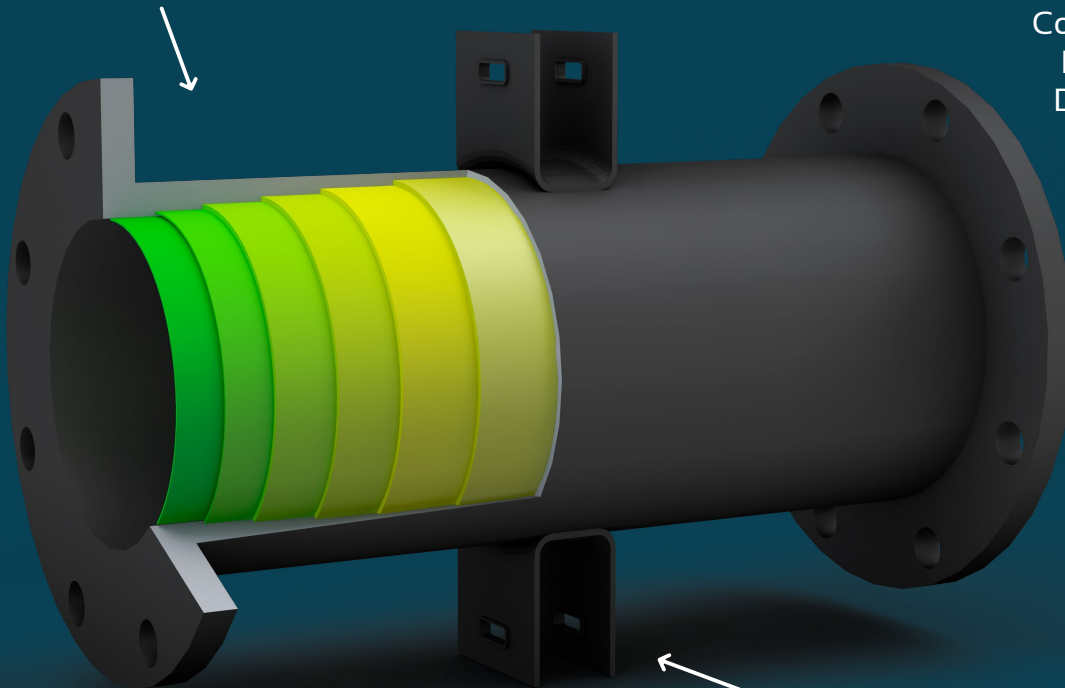
 Materials of Construction: PGR, EPDM, SBRT, NEOPRENE.

*Other sizes and materials available



TRINOVA SLEEVES

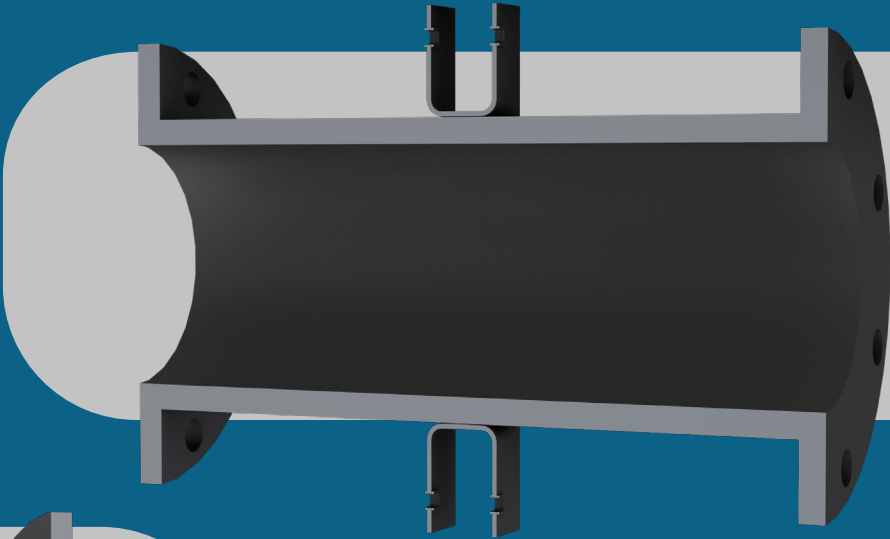
Reinforcement and Elastomer layers



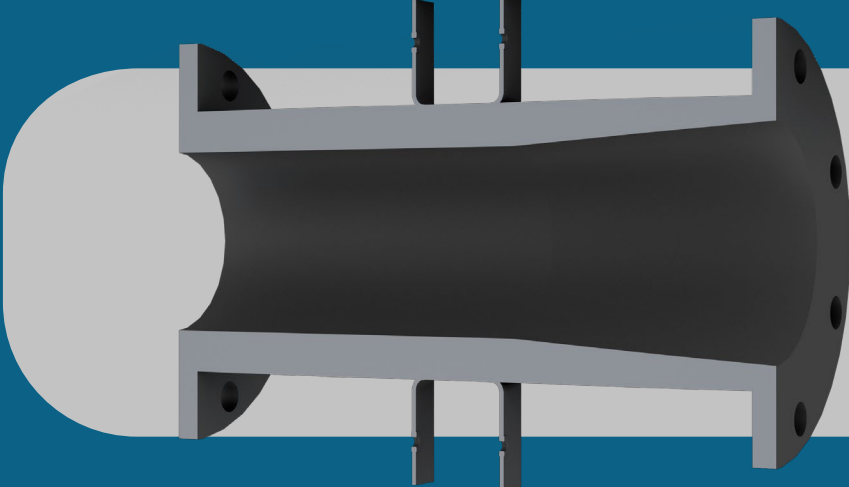
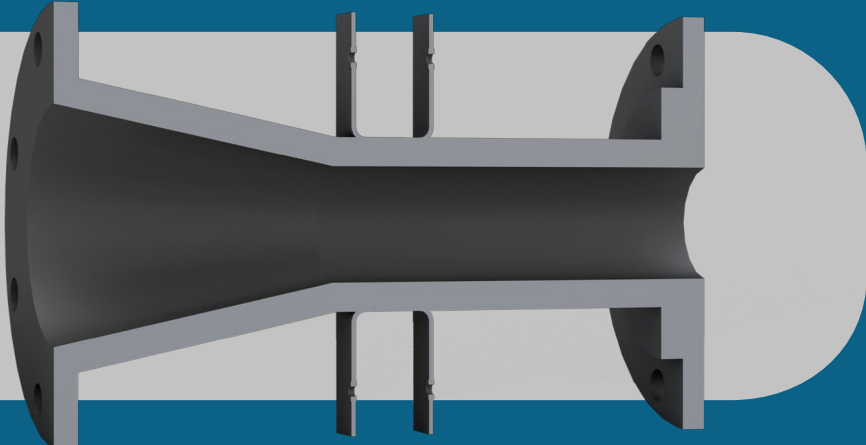
Connection: Full Face
Flange Standards
DIN, ANSI, SABS y
Table D, E

Pinching mechanism tabs

Full Port
Application ON/OFF

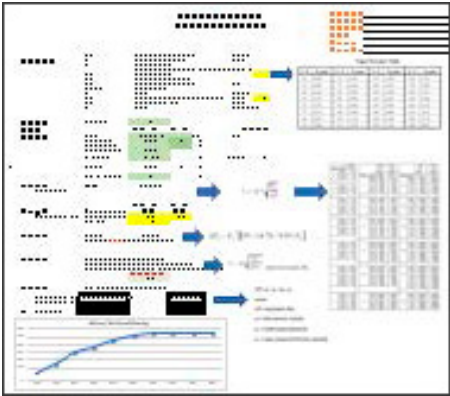


Cone Funnel
Modulating Applications



Cone
Modulating High Abrasion
Applications

Sleeve sizing program available to determine the proper sleeve for each application.



Approximate weights and dimensions for Trinova Sleeves

Size	A Control	A Manual	A Pneumatic	C	Weight App Kilos
25 mm	184 mm	140 mm	127 mm	108 mm	0.7
40 mm	222 mm	165 mm	178 mm	127 mm	1
50 mm	254 mm	178 mm	229 mm	152 mm	2
65 mm	276 mm	191 mm	254 mm	178 mm	3
80 mm	298 mm	203 mm	305 mm	191 mm	4
100 mm	352 mm	229 mm	318 mm	229 mm	5
150 mm	450 mm	267 mm	508 mm	279 mm	10
200 mm	542 mm	406 mm	559 mm	343 mm	16
250 mm	673 mm	508 mm	610 mm	406 mm	20
300 mm	737 mm	610 mm	660 mm	483 mm	25
350 mm	711 mm	711 mm	762 mm	584 mm	34

